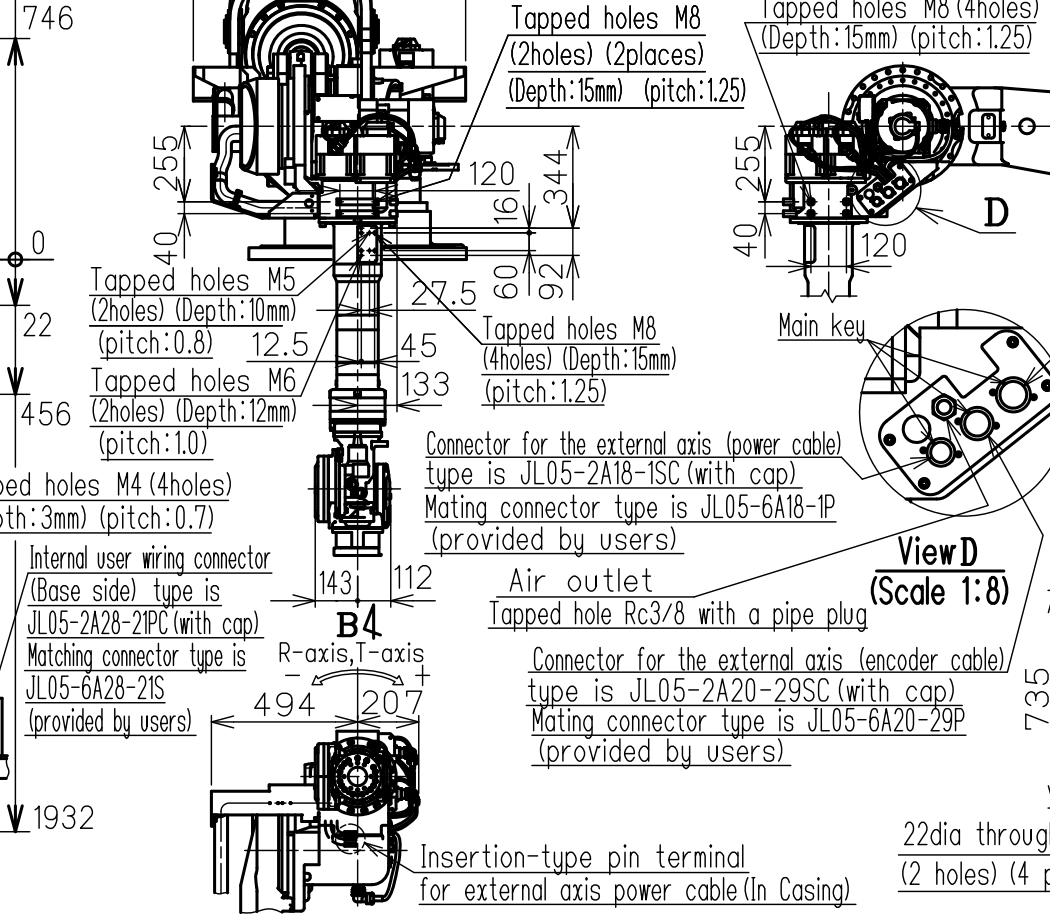
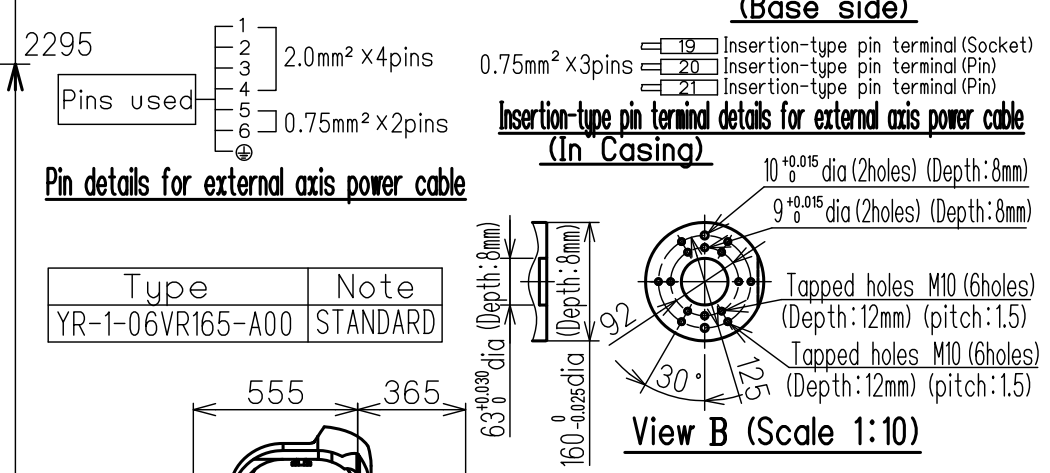
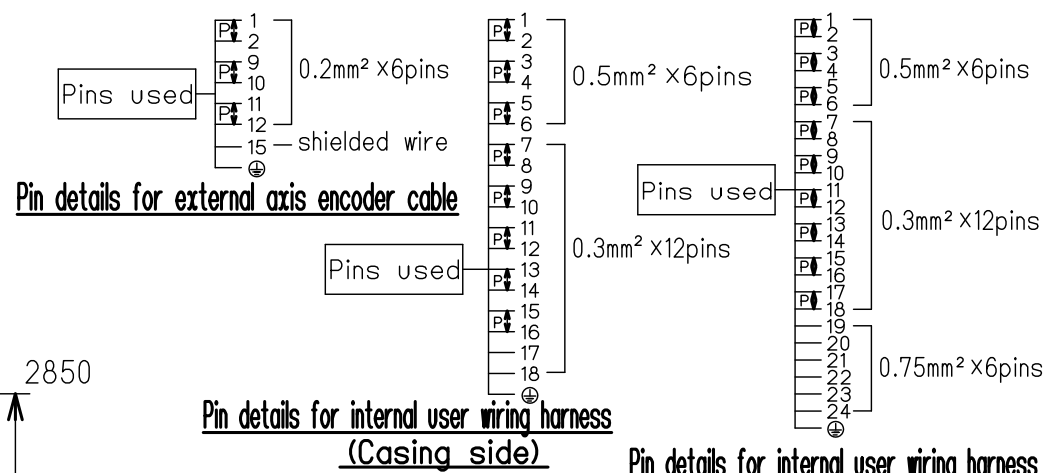
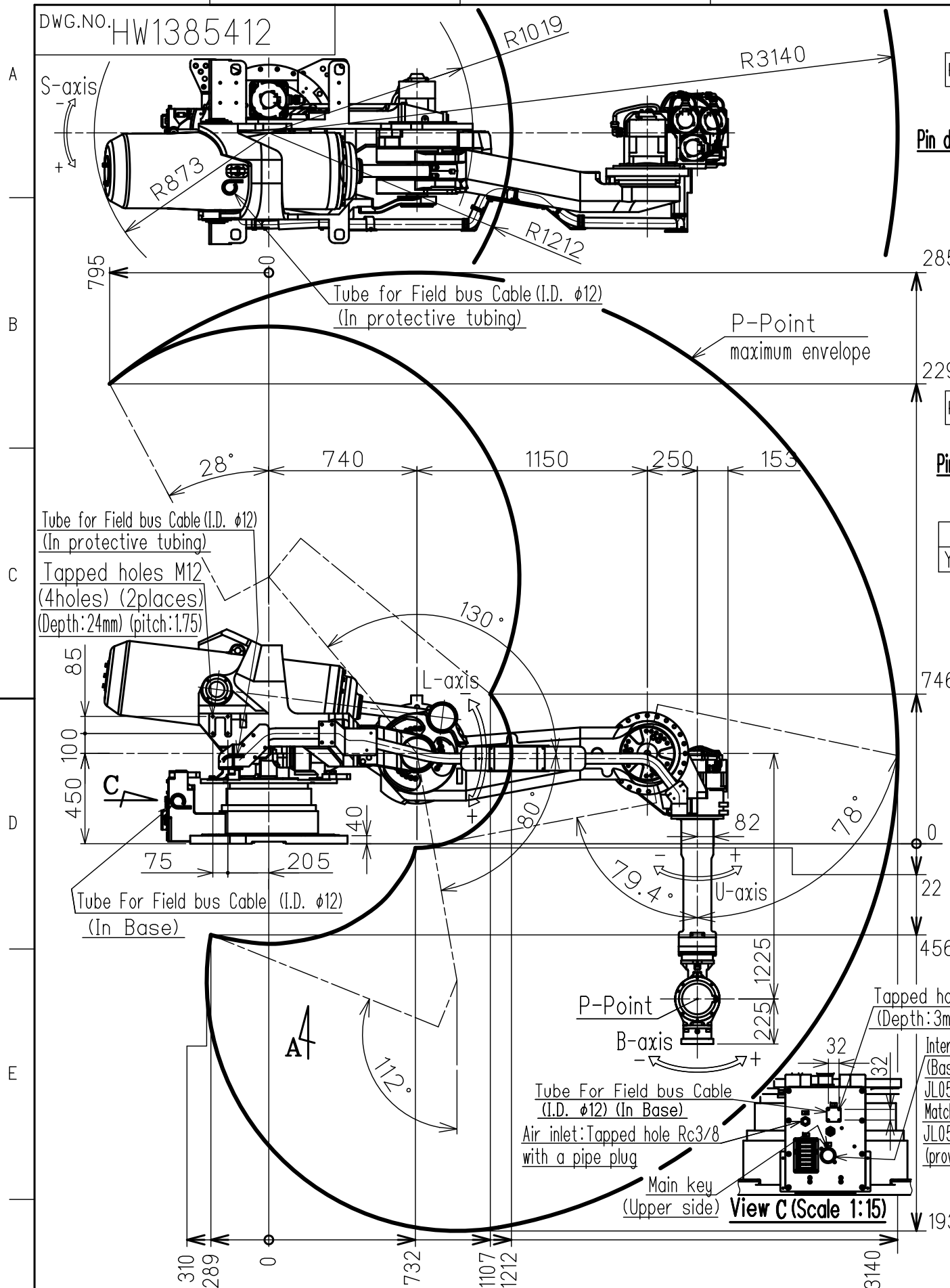


DWG.NO. HW1385412

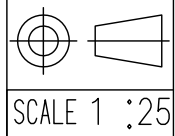


Item	Model	MOTOMAN-GP165R	
Configuration		Vertically articulated	
Degree of Freedom		6	
Payload	Wrist	165 kg	
	On U-arm	30 kg	
Repeatability (※1)		±0.2 mm	
Range of Motion	S-Axis (Turning)	-180° - +180°	
	L-Axis (Lower Arm)	-130° - +80°	
	U-Axis (Upper Arm)	-79.4° - +78°	
	R-Axis (Roll)	-360° - +360°	
	B-Axis (Pitch/Yaw)	-130° - +130°	
T-Axis (Twist)	-360° - +360°		
Max Speed	S-Axis	1.83 rad/s, 105°/s	
	L-Axis	1.83 rad/s, 105°/s	
	U-Axis	1.83 rad/s, 105°/s	
	R-Axis	3.05 rad/s, 175°/s	
	B-Axis	2.62 rad/s, 150°/s	
T-Axis	4.19 rad/s, 240°/s		
Allowable Moment	R-Axis	921 N·m (94 kgf·m)	
	B-Axis	921 N·m (94 kgf·m)	
	T-Axis	490 N·m (50 kgf·m)	
Allowable Inertia (GD <sup>2</sup> /4)	R-Axis	85 kg·m <sup>2</sup>	
	B-Axis	85 kg·m <sup>2</sup>	
	T-Axis	45 kg·m <sup>2</sup>	
Approx. Robot mass		1760kg	
Protected structure		Body: IP54 Wrist: IP67	
Mounting method		Shelf-mounted	
Ambient Conditions	Temperature		0 to +45°C
	Humidity		20 to 80%RH (Non-condensing)
	Vibration		4.9m/s <sup>2</sup> (0.5G) or less
	Altitude		1000m or less
	Others		•Free from explosive or corrosive gas and liquid. •Free from dust, soot, oil, or water. •Free from electrical noise. •Free from strong magnetic fields.
Power Requirements		5.0KVA	
Controller		YRC1000	

※1 Repeatability is conformed to ISO 9283.  
※2 The manipulator is in the home position.  
Units: mm

Note:  
1. All rights reserved.  
2. Please note that the data is subject to be deleted without advance notice.  
3. No warranty is given in relation to the data including the specification.  
4. We are not responsible for any damages or loss caused by the use of the data.

FOR STUDY PURPOSE ONLY



**YASKAWA**  
株式会社 安川電機

Reference Drawing

TITLE MOTOMAN-GP165R  
DIMENSION DIAGRAM

DRWN DATE Oct.03.'17  
DWG.NO. HW1385412

SIZE A3